

**This electronic collection of documents is provided  
for the convenience of the user  
and is Not a Certified Document –**

**The documents contained herein were originally issued  
and sealed by the individuals whose names and license  
numbers appear on each page, on the dates appearing  
with their signature on that page.**

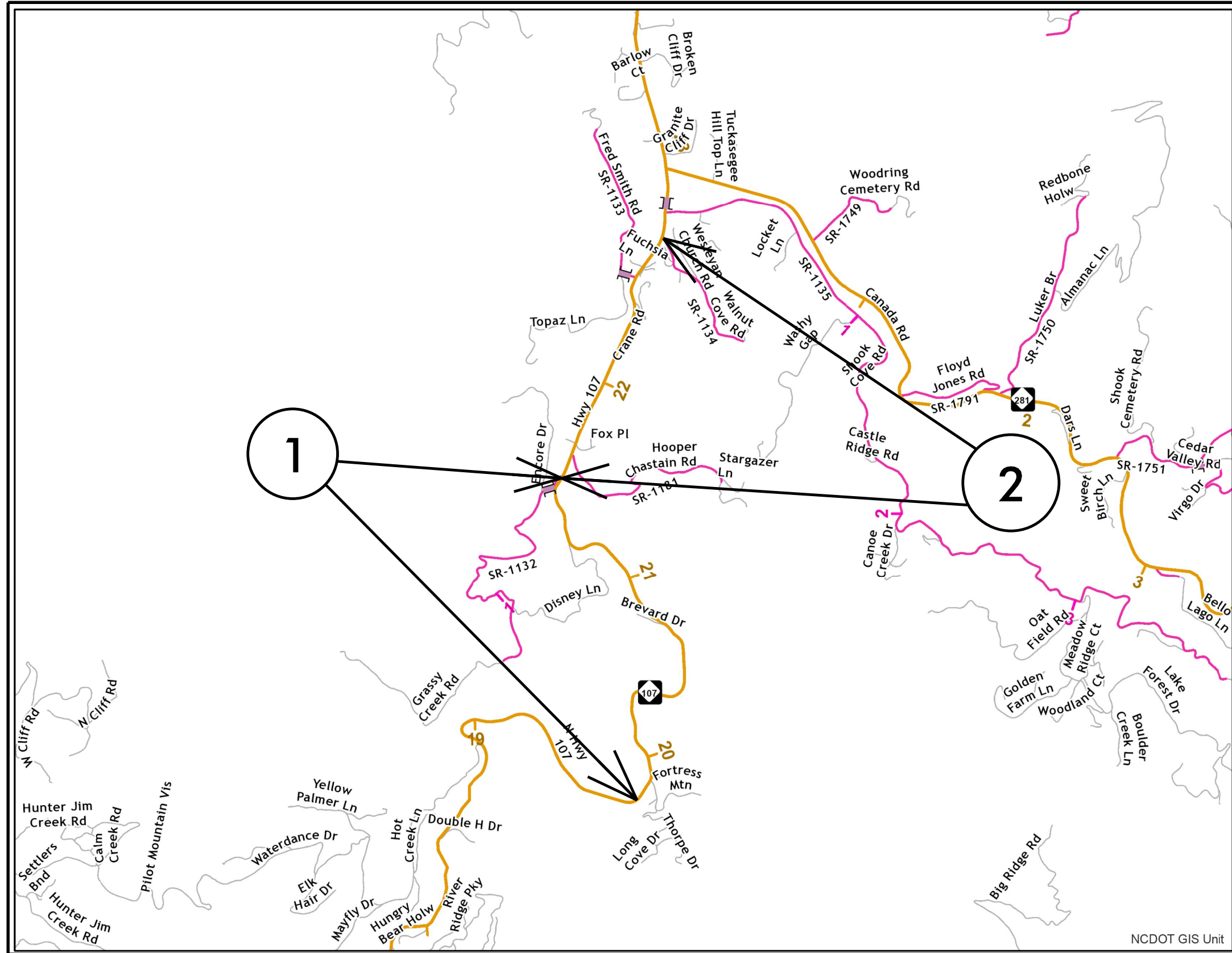
**This file or an individual page  
shall not be considered a certified document.**

PROJECT REFERENCE NO.		SHEET NO.
2022CPT.14.04.10501		1
STATE PROJECT	F.A. PROJECT NO.	DESCRIPTION
2022CPT.14.04.20501		

# JACKSON COUNTY

**TIP PROJECT: N/A**

**CONTRACT: DN00757**



**MAP 1**



**BEG**



**END**

**MAP 2**



**BEG**



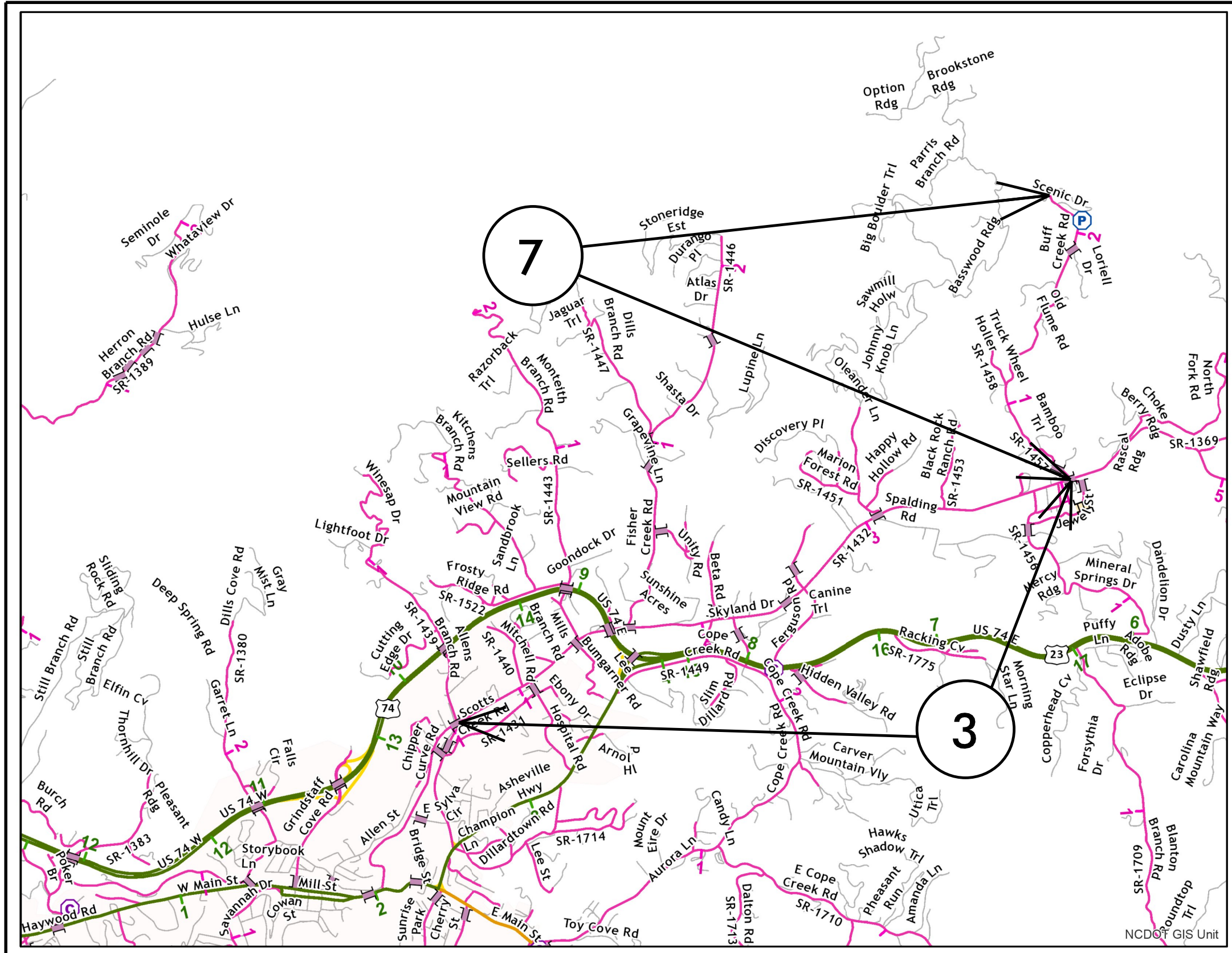
**END**

PROJECT REFERENCE NO.		SHEET NO.
2022CPT.14.04.10501		2
STATE PROJECT	F.A. PROJECT NO.	DESCRIPTION
2022CPT.14.04.20501		

# JACKSON COUNTY

**TIP PROJECT: N/A**

**CONTRACT: DN00757**



**MAP 3**



**BEG**



**END**

**MAP 7**



**BEG**



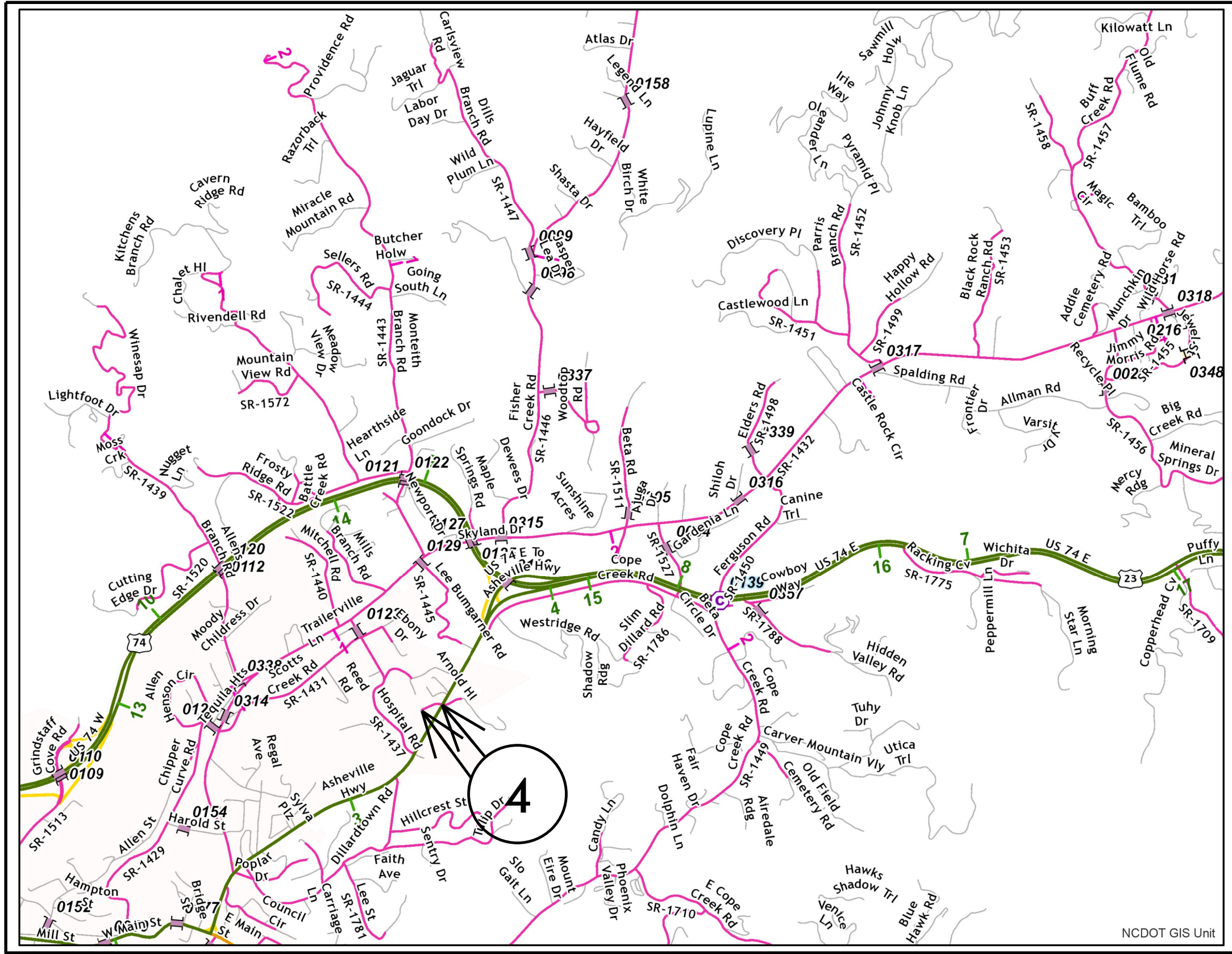
**END**



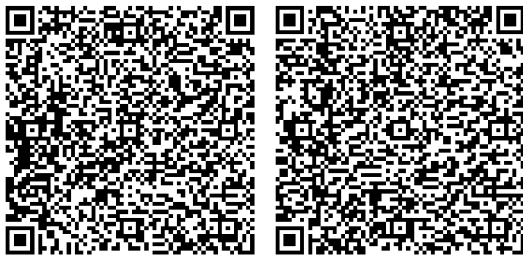
PROJECT REFERENCE NO.		SHEET NO.
2022CPT.14.04.10501		3
STATE PROJECT	F.A. PROJECT NO.	DESCRIPTION
2022CPT.14.04.20501		

# JACKSON COUNTY

**TIP PROJECT: N/A**  
**CONTRACT: DN00757**



**MAP 4**



**BEG**

**END**





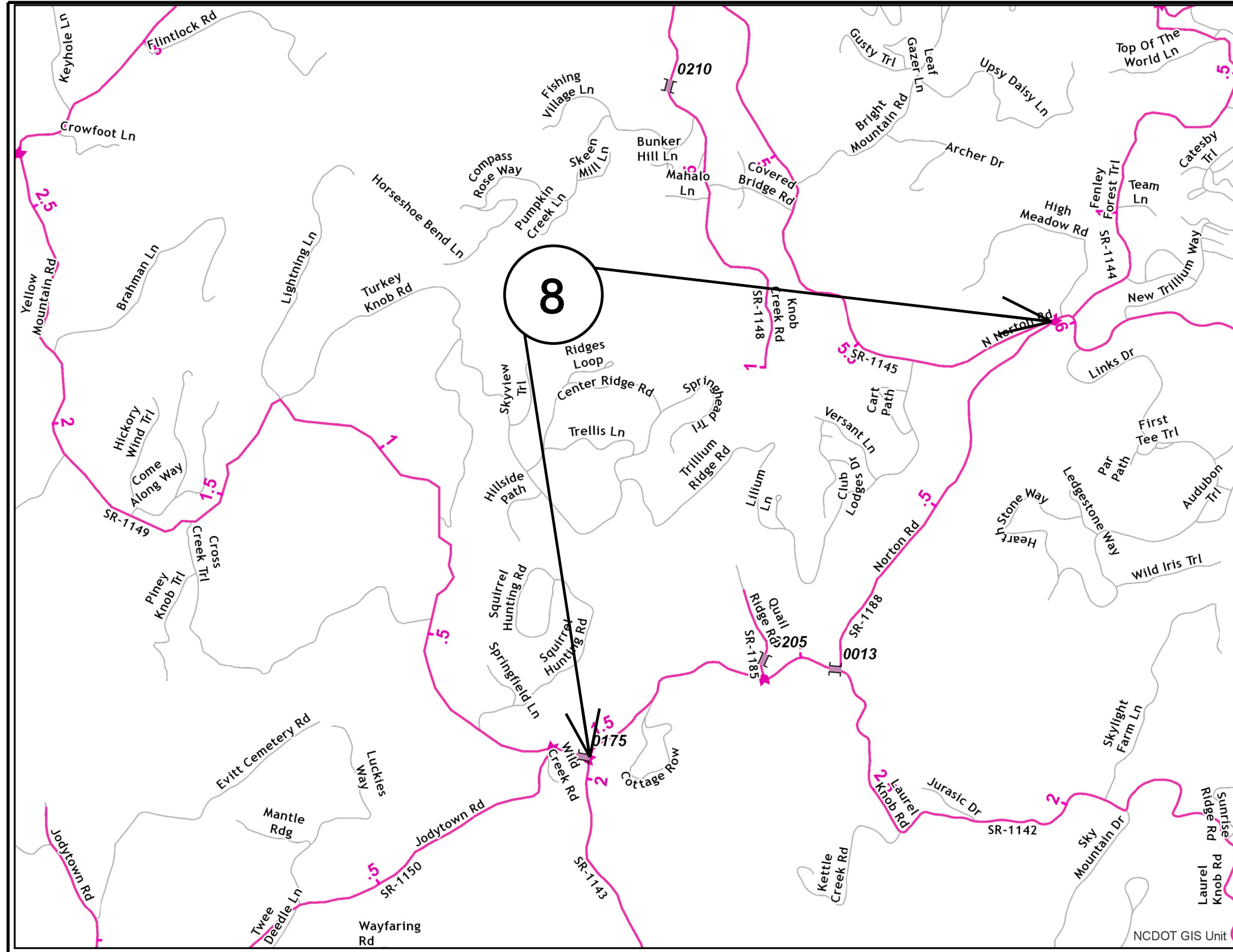


PROJECT REFERENCE NO.		SHEET NO.
2022CPT.14.04.10501		6
STATE PROJECT	F.A. PROJECT NO.	DESCRIPTION
2022CPT.14.04.20501		

# JACKSON COUNTY

**TIP PROJECT: N/A**

**CONTRACT: DN00757**



**MAP 8**



**BEG**



**END**

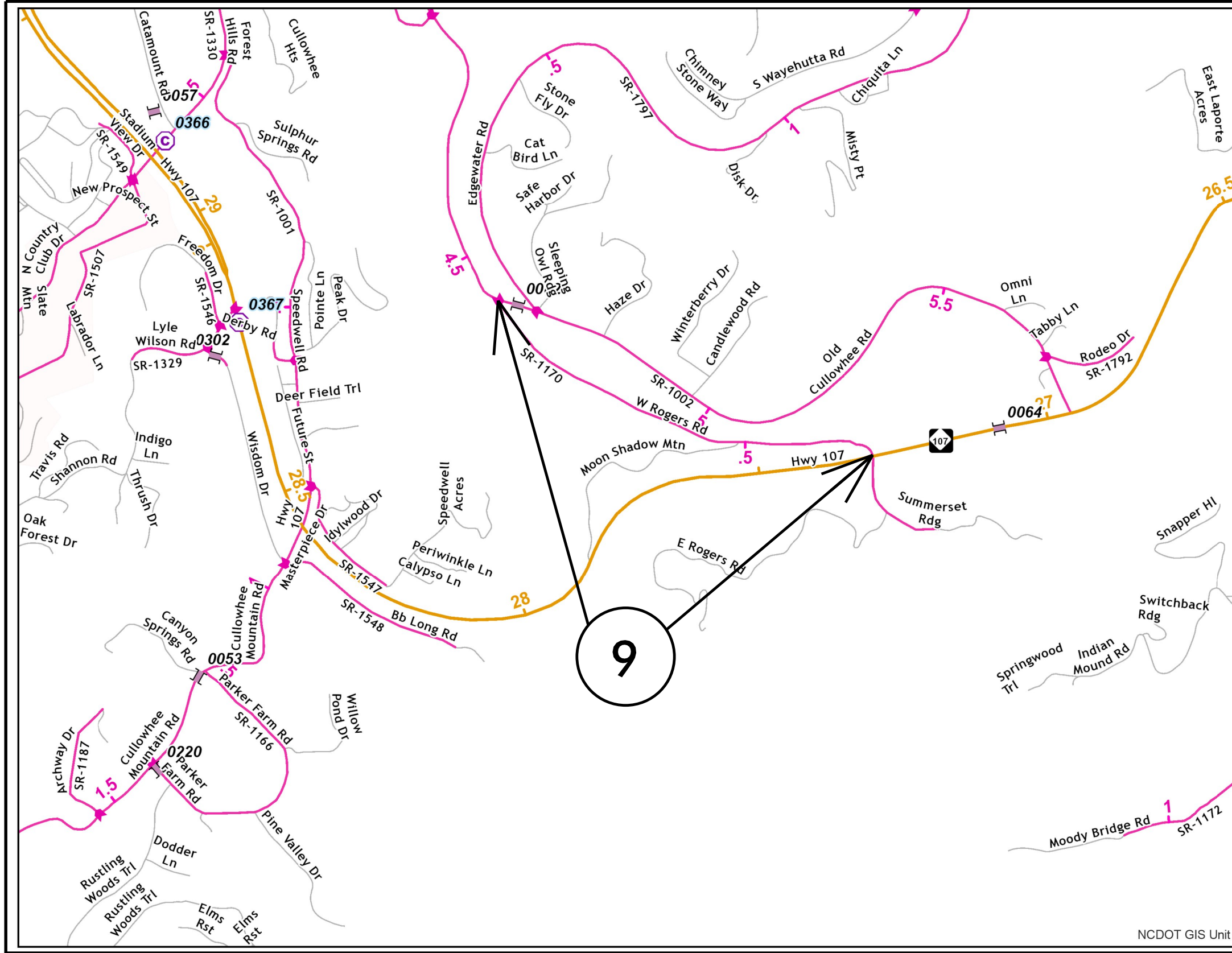


# JACKSON COUNTY

PROJECT REFERENCE NO.	SHEET NO.	
2022CPT.14.04.10501	7	
STATE PROJECT	F.A. PROJECT NO.	DESCRIPTION
2022CPT.14.04.20501		

TIP PROJECT: N/A

CONTRACT: DN00757



## MAP 9



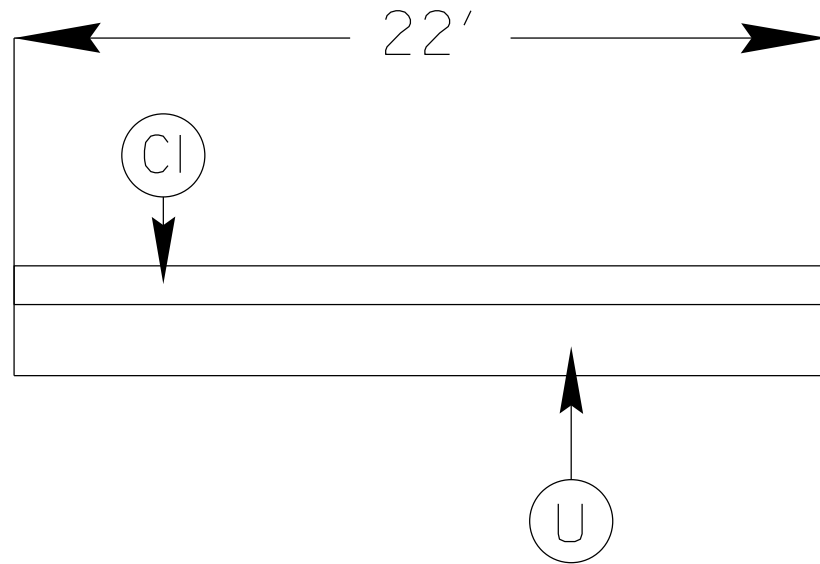
BEG



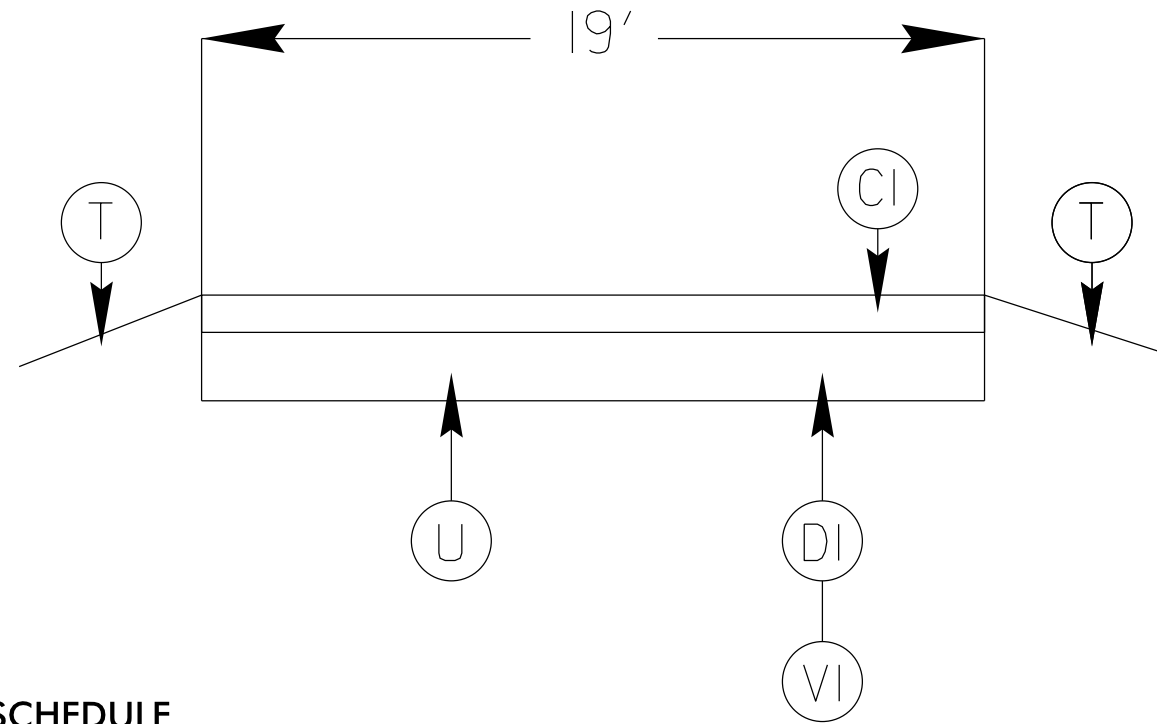
END



# TYPICAL 1



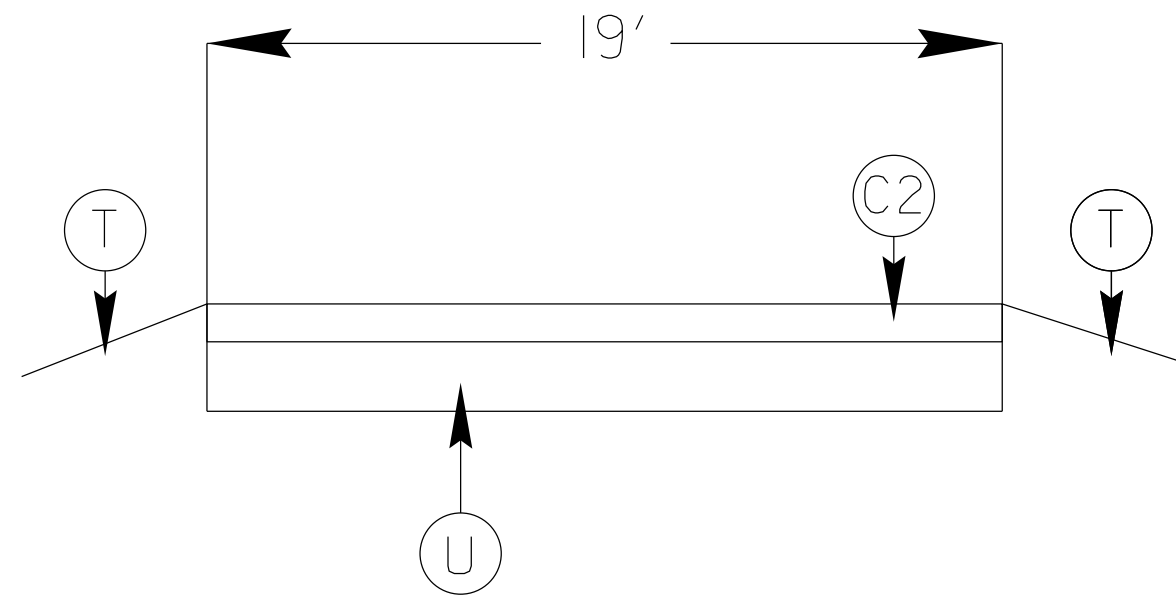
# TYPICAL 2



## SURFACING SCHEDULE

ITEM NO	DESCRIPTION
C1	PROP. APPROX. 1 1/2" ASPHALT CONCRETE SURFACE COURSE, TYPE SF9.5A AT AN AVERAGE RATE OF 168 LBS.PER.SQ.YD
C2	PROP. APPROX. 1 1/4" ASPHALT CONCRETE SURFACE COURSE, TYPE SF9.5B, AT AN AVERAGE RATE OF 137.5 LBS. PER SQ YD
C3	PROP. APPROX. 1 " ASPHALT CONCRETE SURFACE COURSE, (LEVELING) TYPE S9.5B AT AN AVERAGE RATE OF 110 LBS PER SQ.YD.
C4	PROP. APPROX. 1 1/2" ASPHALT CONCRETE SURFACE COURSE, TYPE S9.5B, AT AN AVERAGE RATE OF 165 LBS. PER SQ. YD
D1	PROP. APPROX. 3" ASPHALT CONCRETE INTERMEDIATE COURSE, TYPE I19.0C, AT AN AVERAGE RATE OF 342 LBS. PER SQ YD
V1	MILLED ASPHALT PAVEMENT 3 1/2" IN DEPTH IN LOCATIONS AS DIRECTED BY PROJECT ENGINEER
V2	MILLED ASPHALT PAVEMENT 1 1/2" IN DEPTH IN LOCATIONS AS DIRECTED BY PROJECT ENGINEER
T	SHOULDER RECONSTRUCTION
U	EXISTING ASPHALT

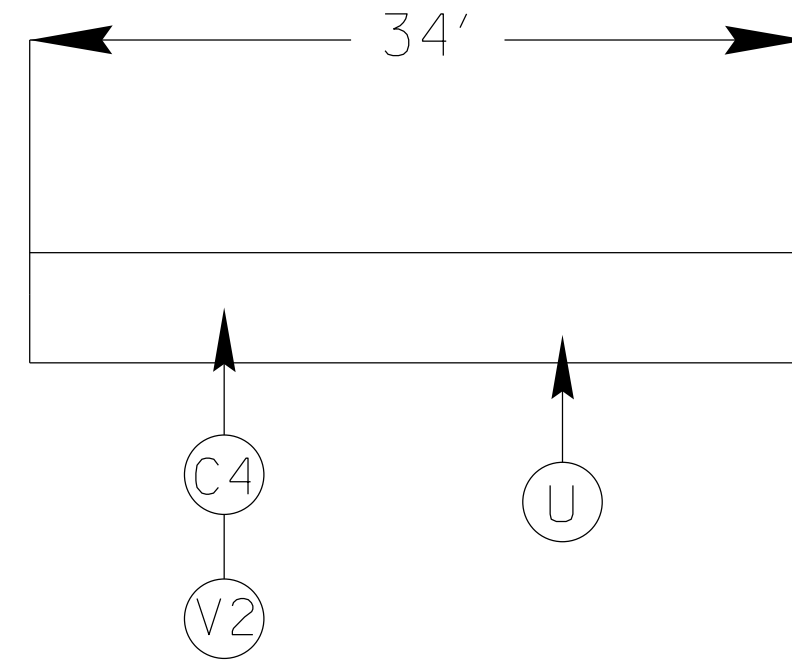
# TYPICAL 3



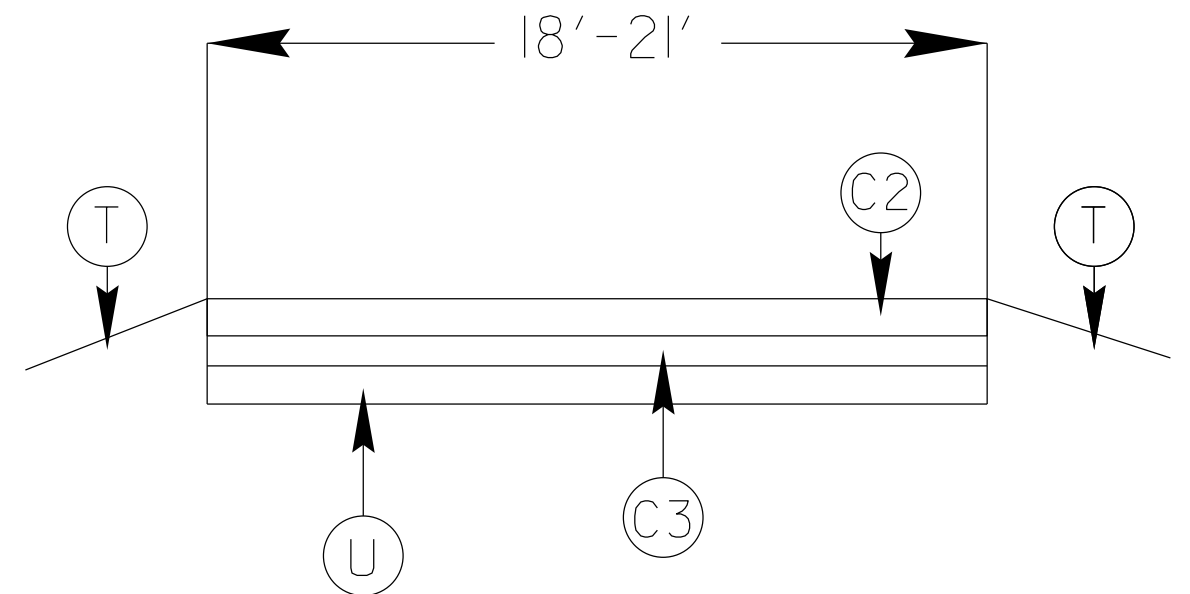
**SURFACING SCHEDULE**

ITEM NO	DESCRIPTION
C1	PROP. APPROX. 1 1/2" ASPHALT CONCRETE SURFACE COURSE, TYPE SF9.5A AT AN AVERAGE RATE OF 168 LBS.PER.SQ.YD
C2	PROP. APPROX. 1 1/4" ASPHALT CONCRETE SURFACE COURSE, TYPE SF9.5B, AT AN AVERAGE RATE OF 137.5 LBS. PER SQ YD
C3	PROP. APPROX. 1 " ASPHALT CONCRETE SURFACE COURSE, (LEVELING) TYPE S9.5B AT AN AVERAGE RATE OF 110 LBS PER SQ.YD.
C4	PROP. APPROX. 1 1/2" ASPHALT CONCRETE SURFACE COURSE, TYPE S9.5B, AT AN AVERAGE RATE OF 165 LBS. PER SQ. YD
D1	PROP. APPROX. 3" ASPHALT CONCRETE INTERMEDIATE COURSE, TYPE I19.0C, AT AN AVERAGE RATE OF 342 LBS. PER SQ YD
V1	MILLED ASPHALT PAVEMENT 3 1/2" IN DEPTH IN LOCATIONS AS DIRECTED BY PROJECT ENGINEER
V2	MILLED ASPHALT PAVEMENT 1 1/2" IN DEPTH IN LOCATIONS AS DIRECTED BY PROJECT ENGINEER
T	SHOULDER RECONSTRUCTION
U	EXISTING ASPHALT

# TYPICAL 4



# TYPICAL 5





PROJECT NO.	SHEET NO.	TOTAL NO.
2022CPT.14.04.10501	10	
2022CPT.14.04.20501		

### SUMMARY OF QUANTITIES

PROJECT NO	COUNTY	MAP NO	ROUTE	DESCRIPTION	TYP NO	LANES	LANE TYPE	FINAL SURFACE TESTING REQUIRED	WARM MIX ASPHALT REQUIRED	LENGTH	WIDTH	1245000000-E	1297000000-E	1503000000-E	1519000000-E	1520000000-E	1523000000-E	1575000000-E	1704000000-E	1881000000-E				
												SHOULDER RECONSTRUCTION	3.5" MILLING	1½" MILLING	INTERMEDIATE COURSE, I19.0C	SURFACE COURSE, S9.5B	LEVELING COURSE, S9.5B	SURFACE COURSE, S9.5C	ASPHALT BINDER FOR PLANT MIX	PATCHING EXISTING PAVEMENT	GENERIC PAVING ITEM SINUSOIDAL MILLED RUMBLE STRIPS 14"	GENERIC PAVING ITEM SINUSOIDAL MILLED RUMBLE STRIPS 8"		
												MI	FT	SMI	SY	SY	TONS	TONS	TONS	TONS	TONS	TONS	LF	LF
2022CPT.14.04.10501	Jackson	1	NC 107	FROM POWER HOUSE (MM19.8) TO SR 1132 (GRASSY CREEK RD)	1	2	2WU	NO	NO	1.8	22	3.60					1,963	118	824	9,500.0	19,008.0			
<b>TOTAL FOR MAP NO. 1</b>										<b>1.8</b>		<b>3.60</b>					<b>1,963</b>	<b>118</b>	<b>824</b>	<b>9,500.0</b>	<b>19,008.0</b>			
2022CPT.14.04.10501	Jackson	2	NC 107	FROM SR 1132 (GRASSY CREEK RD) TO SR 1134 (WALNUT COVE RD)	2	2	2WU	NO	NO	1.06	19	2.12	13,681	2,865			1,185	209						
<b>TOTAL FOR MAP NO. 2</b>										<b>1.06</b>		<b>2.12</b>	<b>13,681</b>	<b>2,865</b>			<b>1,185</b>	<b>209</b>						
<b>TOTAL FOR PROJ NO. 2022CPT.14.04.10501</b>										<b>2.86</b>		<b>5.72</b>	<b>13,681</b>	<b>2,865</b>			<b>3,148</b>	<b>327</b>	<b>824</b>	<b>9,500.0</b>	<b>19,008.0</b>			
												<b>13,681</b>												
2022CPT.14.04.20501	Jackson	3	SR 1432 (SKYLAND DRIVE)	FROM SR 1429 (CHIPPER CURVE RD) TO SR 1457 (BUFF CREEK RD)	3	2	2WU	NO	NO	3.38	19	6.76				2,904			195	90				
<b>TOTAL FOR MAP NO. 3</b>										<b>3.38</b>		<b>6.76</b>				<b>2,904</b>			<b>195</b>	<b>90</b>				
2022CPT.14.04.20501	Jackson	4	SR 1477 (HEALTHCARE DRIVE)	FROM US 23 BUS. (ASHEVILLE HWY) TO END OF STATE MAINTENANCE	4	2	2WU	NO	NO	0.07	34					126			8					
<b>TOTAL FOR MAP NO. 4</b>										<b>0.07</b>					<b>1,396</b>	<b>126</b>			<b>8</b>					
2022CPT.14.04.20501	Jackson	5	SR 1530 (WEST COLLEGE DRIVE)	FROM SR 1529 (COLLEGE DR) TO END OF MAINTENANCE	5	2	2WU	NO	NO	0.26	21	0.52				228	177		27					
<b>TOTAL FOR MAP NO. 5</b>										<b>0.26</b>		<b>0.52</b>				<b>228</b>	<b>177</b>		<b>27</b>					
2022CPT.14.04.20501	Jackson	6	SR 1121 (BREEDLOVE ROAD)	FROM SR 1120 (BREEDLOVE) TO END OF STATE MAINTENANCE	5	2	2WU	NO	NO	3.22	19	6.43				2,541	775		222					
<b>TOTAL FOR MAP NO. 6</b>										<b>3.22</b>		<b>6.43</b>				<b>2,541</b>	<b>775</b>		<b>222</b>					
2022CPT.14.04.20501	Jackson	7	SR 1457 (BUFF CREEK ROAD)	SR 1432 (SKYLAND DR) TO END OF STATE MAINTENANCE	3	2	2WU	NO	NO	1.79	17.5	1.79				1,415			95	150				
<b>TOTAL FOR MAP NO. 7</b>										<b>1.79</b>		<b>1.79</b>				<b>1,415</b>			<b>95</b>	<b>150</b>				
2022CPT.14.04.20501	Jackson	8	SR 1188 (NORTON ROAD)	FROM SR 1145 (NORTH NORTON RD) TO SR 1149 (YELLOW MTN RD)	5	2	2WU	NO	NO	1.56	18	3.12				1,228	772		134					
<b>TOTAL FOR MAP NO. 8</b>										<b>1.56</b>		<b>3.12</b>				<b>1,228</b>	<b>772</b>		<b>134</b>					
2022CPT.14.04.20501	Jackson	9	SR 1170 (WEST ROGERS ROAD)	SR 1002 (OLD CULLOWHEE RD) TO NC 107	5	2	2WU	NO	NO	0.728	19	1.06				625	375		67					
<b>TOTAL FOR MAP NO. 9</b>										<b>0.728</b>		<b>1.06</b>				<b>625</b>	<b>375</b>		<b>67</b>					
<b>TOTAL FOR PROJ NO. 2022CPT.14.04.20501</b>										<b>11.008</b>		<b>19.68</b>		<b>1,396</b>		<b>9,067</b>	<b>2,099</b>		<b>748</b>	<b>240</b>				
												<b>1,396</b>												
<b>GRAND TOTAL</b>												<b>13.868</b>		<b>25.40</b>	<b>13,681</b>	<b>1,396</b>	<b>2,865</b>	<b>9,067</b>	<b>2,099</b>	<b>3,148</b>	<b>1,075</b>	<b>1,064</b>	<b>9,500.0</b>	<b>19,008.0</b>

PROJECT NO.	SHEET NO.	TOTAL NO.
2022CPT.14.04.10501		
2022CPT.14.04.20501	11	

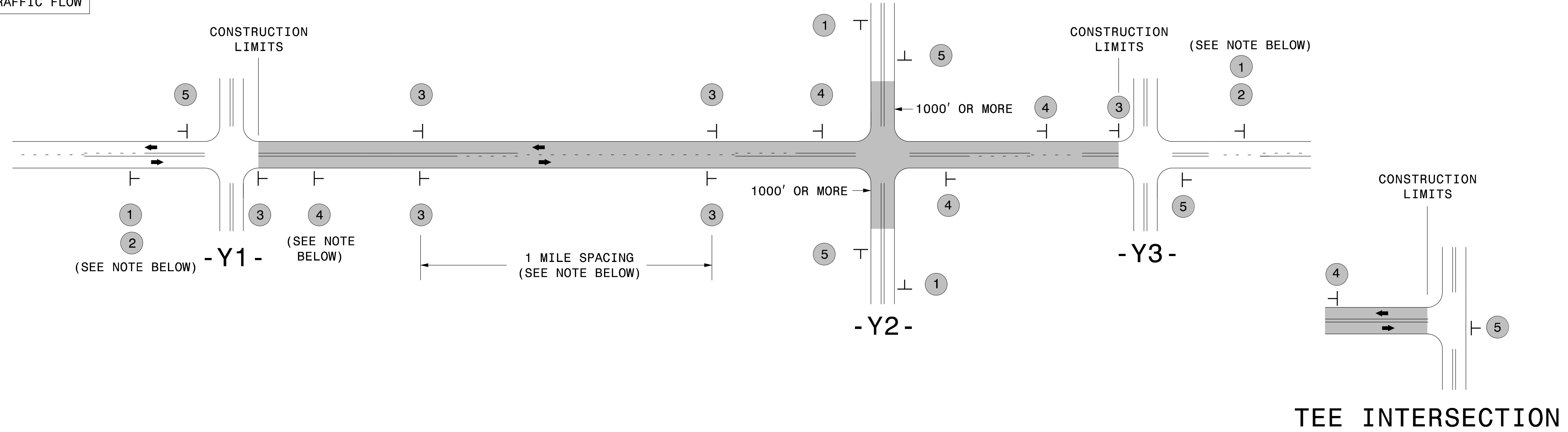
**THERMOPLASTIC AND PAINT QUANTITIES**

PROJECT NO	COUNTY	MAP NO	ROUTE	DESCRIPTION	TYP NO	LANES	LANE TYPE	LENGTH	WIDTH	4413000000-E	4457000000-N	4685000000-E	4688000000-E	4810000000-E		4830000000-E	4835000000-E	4840000000-N		4845000000-N		4890000000-E		4895000000-N				
										WORK ZONE ADVANCE WARNING SIGNS	TEMPORARY TRAFFIC CONTROL	THERMOPLAS TIC PAVEMENT MARKING LINES (4", 90 MILS)	THERMOPLAS TIC PAVEMENT MARKING LINES (6", 90 MILS)	4" WHITE PAINT	4" YELLOW PAINT	16" WHITE PAINT	24" WHITE PAINT	PAINT MSG RXR	PAINT MSG SCHOOL	PAINT LT ARROW	PAINT RT ARROW	GENERIC PAVEMENT MARKING ITEM HOT SPRAY THERMOPLAS TIC PAVEMENT MARKING LINES,(4", 50 MIL, YELLOW)	GENERIC PAVEMENT MARKING ITEM HOT SPRAY THERMOPLAS TIC PAVEMENT MARKING LINES,(4", 50 MIL, WHITE)	NON-CAST IRON SNOW PLOWABLE MARKERS				
									MI	FT	SF	LS	LF	LF	LF	LF	EA	EA	EA	EA	LF	LF	EA					
2022CPT.14.04.10501	Jackson	1	NC 107	FROM POWER HOUSE (MM19.8) TO SR 1132 (GRASSY CREEK RD)	1	2	2WU	1.8	22	184.0	1	19,008.0	19,008.0											121				
<b>TOTAL FOR MAP NO. 1</b>									<b>1.8</b>		<b>184.0</b>	<b>1</b>	<b>19,008</b>	<b>19,008</b>											<b>121</b>			
2022CPT.14.04.10501	Jackson	2	NC 107	FROM SR 1132 (GRASSY CREEK RD) TO SR 1134 (WALNUT COVE RD)	2	2	2WU	1.06	19	108.0													11,194.0	11,194	71			
<b>TOTAL FOR MAP NO. 2</b>									<b>1.06</b>		<b>108.0</b>														<b>11,194</b>	<b>11,194</b>	<b>71</b>	
<b>TOTAL FOR PROJ NO. 2022CPT.14.04.10501</b>									<b>2.86</b>		<b>292.0</b>	<b>1</b>	<b>19,008</b>	<b>19,008</b>												<b>11,194</b>	<b>11,194</b>	<b>192</b>
																						<b>22,388</b>						
2022CPT.14.04.20501	Jackson	3	SR 1432 (SKYLAND DRIVE)	FROM SR 1429 (CHIPPER CURVE RD) TO SR 1457 (BUFF CREEK RD)	3	2	2WU	3.38	19	345.0				72,738	72,738	250	400	6	12					268				
<b>TOTAL FOR MAP NO. 3</b>									<b>3.38</b>		<b>345.0</b>				<b>72,738</b>	<b>72,738</b>	<b>250</b>	<b>400</b>	<b>6</b>	<b>12</b>				<b>268</b>				
2022CPT.14.04.20501	Jackson	4	SR 1477 (HEALTHCARE DRIVE)	FROM US 23 BUS. (ASHEVILLE HWY) TO END OF STATE MAINTENANCE	4	2	2WU	0.07	34	48.0				1,506	1,506					1	1							
<b>TOTAL FOR MAP NO. 4</b>									<b>0.07</b>		<b>48.0</b>				<b>1,506</b>	<b>1,506</b>					<b>1</b>	<b>1</b>						
2022CPT.14.04.20501	Jackson	5	SR 1530 (WEST COLLEGE DRIVE)	FROM SR 1529 (COLLEGE DR) TO END OF MAINTENANCE	5	2	2WU	0.26	21	27.0				5,595	5,595													
<b>TOTAL FOR MAP NO. 5</b>									<b>0.26</b>		<b>27.0</b>				<b>5,595</b>	<b>5,595</b>												
2022CPT.14.04.20501	Jackson	6	SR 1121 (BREEDLOVE ROAD)	FROM SR 1120 (BREEDLOVE RD) TO END OF STATE MAINTENANCE	5	2	2WU	3.22	19	328.0				69,294	69,294													
<b>TOTAL FOR MAP NO. 6</b>									<b>3.22</b>		<b>328.0</b>				<b>69,294</b>	<b>69,294</b>												
2022CPT.14.04.20501	Jackson	7	SR 1457 (BUFF CREEK ROAD)	SR 1432 (SKYLAND DR) TO END OF STATE MAINTENANCE	3	2	2WU	1.79	17.5	183.0				38,521	38,512													
<b>TOTAL FOR MAP NO. 7</b>									<b>1.79</b>		<b>183.0</b>				<b>38,521</b>	<b>38,512</b>												
2022CPT.14.04.20501	Jackson	8	SR 1188 (NORTON ROAD)	FROM SR 1145 (NORTH NORTON RD) TO SR 1149 (YELLOW MTN RD)	5	2	2WU	1.56	18	160.0				33,571	33,571													
<b>TOTAL FOR MAP NO. 8</b>									<b>1.56</b>		<b>160.0</b>				<b>33,571</b>	<b>33,571</b>												
2022CPT.14.04.20501	Jackson	9	SR 1170 (WEST ROGERS ROAD)	SR 1002 (OLD CULLOWHEE RD) TO NC 107	5	2	2WU	0.728	19	75.0				15,667	15,667													
<b>TOTAL FOR MAP NO. 9</b>									<b>0.728</b>		<b>75</b>				<b>15,667</b>	<b>15,667</b>												
<b>TOTAL FOR PROJ NO. 2022CPT.14.04.20501</b>									<b>11.008</b>		<b>1,166</b>				<b>236,892</b>	<b>236,883</b>	<b>250</b>	<b>500</b>	<b>6</b>	<b>12</b>	<b>1</b>	<b>1</b>					<b>268</b>	
														<b>473,775</b>					<b>18</b>		<b>2</b>							
<b>GRAND TOTAL</b>									<b>13.868</b>		<b>1,458</b>	<b>1</b>	<b>19,008</b>	<b>19,008</b>	<b>236,892</b>	<b>236,883</b>	<b>250</b>	<b>500</b>	<b>6</b>	<b>12</b>	<b>1</b>	<b>1</b>			<b>11,194</b>	<b>11,194</b>	<b>460</b>	
														<b>473,775</b>					<b>18</b>		<b>2</b>				<b>22,388</b>			



# SIGNING FOR RESURFACING PROJECTS

**LEGEND**  
 ┆ STATIONARY SIGN  
 ← DIRECTION OF TRAFFIC FLOW



## MAINLINE (-L-) SIGNING

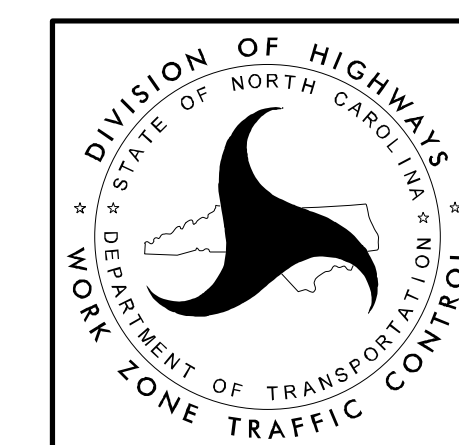
## -Y- LINE SIGNING

SIGNING NOTES AND PLACEMENT PER DIRECTION	1		PLACE 1000' PRIOR TO BEGINNING OF CONSTRUCTION LIMITS. ONLY USED ON -Y- LINES IF RESURFACING LIMITS EXTEND 1000' ALONG -Y- LINE.	<p>NO REQUIRED STATIONARY SIGNING FOR THE FOLLOWING -Y- LINE CONDITIONS:</p> <ol style="list-style-type: none"> <li>1) LESS THAN 1000' OF RESURFACING ALONG -Y- LINE</li> <li>2) SUBDIVISION ROADS</li> <li>3) DEAD END ROADS</li> </ol> <p>WHEN PAVING/CONSTRUCTION ACTIVITIES PROCEED ACROSS AN UNSIGNED -Y- LINE, PORTABLE ADVANCE WARNING SIGNS SHALL BE USED ALONG THE -Y- LINE AS SHOWN BELOW. REMOVE UPON COMPLETION OF WORK.</p> <div style="display: flex; justify-content: space-around;"> <div style="text-align: center;">             W20-1 48" X 48"            PLACED 500' IN ADVANCE OF FLAGGER.         </div> <div style="text-align: center;">             W20-7 A 48" X 48"            PLACED 250' IN ADVANCE OF FLAGGER.         </div> </div>
	2		#2 SIGN ONLY USED WHEN CONSTRUCTION LIMITS ARE 2 OR MORE MILES IN LENGTH. ROUND UP TO NEXT WHOLE NUMBER. (NO FRACTIONAL OR DECIMAL NUMBERS)	
	3		- PLACE INITIALLY AT THE CONSTRUCTION LIMITS AND SPACE 1 MILE APART THEREAFTER. - AT TEE INTERSECTIONS INSTALL INITIALLY 1/2 MILE FROM INTERSECTION AND SPACE 1 MILE APART THEREAFTER.	
	4		- THESE ARE FOR -Y- LINES THAT ARE "THROUGH" ROADWAYS. - DEAD END AND SUBDIVISION ROADS ARE NOT "THROUGH" ROADWAYS. - INSTALL 500' +/- FROM EACH -Y- LINE APPROACH AS SHOWN ABOVE. - FOR MULTIPLE -Y- LINES THAT ARE SEPARATED BY 0.25 MILES OR LESS, TREAT AS A SINGLE UNIT AND INSTALL WITHIN 500' OF EACH APPROACH. - A MAXIMUM OF 2 SIGN SETS PER MILE. DO NOT INSTALL WHEN -Y- LINES ARE WITHIN 0.5 MILES FROM "END ROAD WORK" SIGN. - FOR TEE INTERSECTIONS, INSTALL WITHIN 500' +/- OF THE INTERSECTION ALONG -L- LINE.	
	5		PLACE 500' FOLLOWING THE END OF CONSTRUCTION LIMITS OR AS SHOWN WHEN WORK ENDS AT A 3-WAY TEE INTERSECTION.	

THE ABOVE SIGNS ARE ALL THAT ARE REQUIRED FOR A CONTRACTOR TO BEGIN A RESURFACING CONTRACT. ANY ADDITIONAL SIGNS REQUESTED BY NCDOT DIVISIONS SHALL BE INSTALLED WITHIN 7 BUSINESS DAYS OF THE START OF CONTRACT WORK.

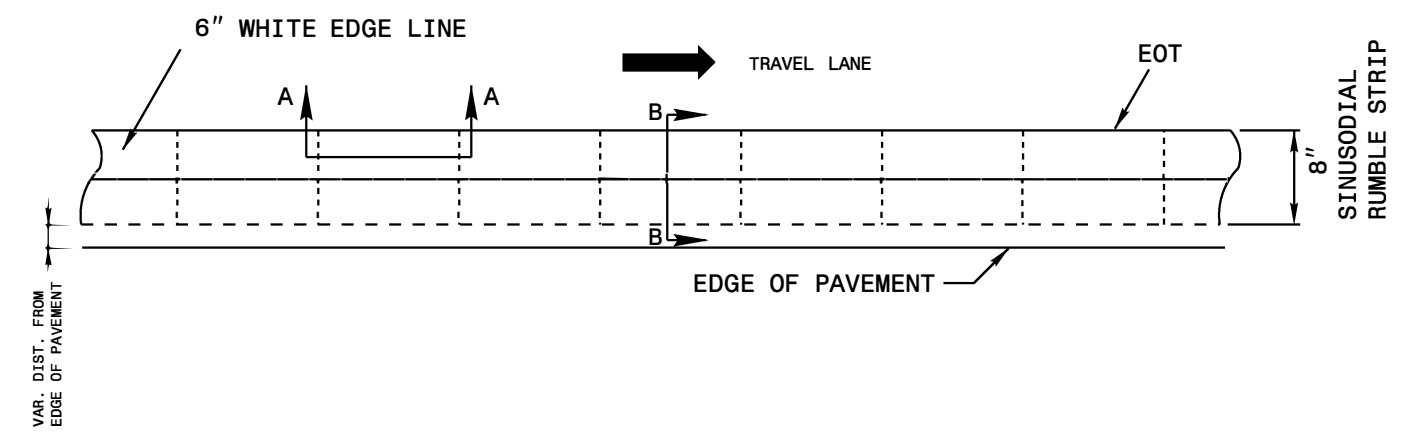
### MAPS LESS THAN 2 MILES

FOR RESURFACING MAPS WITH CONSTRUCTION LIMITS LESS THAN 2 MILES IN LENGTH, NO STATIONARY SIGNS ARE REQUIRED. USE PORTABLE "ROAD UNDER CONSTRUCTION" OR "ROAD WORK AHEAD" SIGNS IN LIEU OF STATIONARY ADVANCE WARNINGS SIGNS.

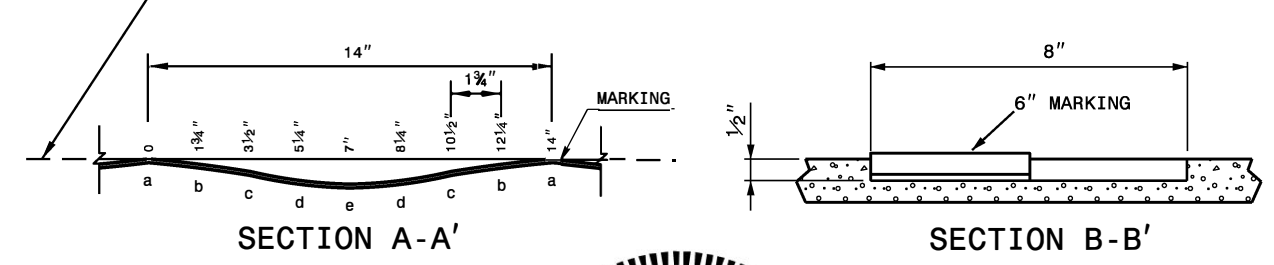


ADVANCE WARNING SIGNS FOR RURAL AND SUBURBAN 2-LANE ROADWAY RESURFACING

### 8" EDGE LINE TREATMENT



### 8" EDGE LINE MILLING DETAIL

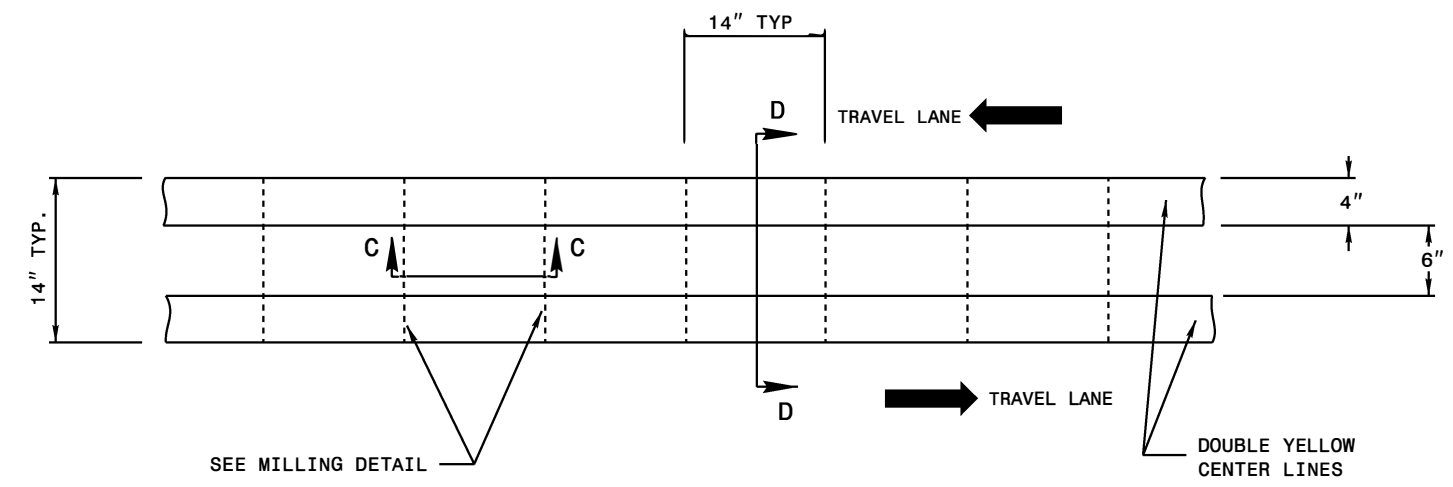


LOCATION	DEPTH	
	MIL	INCHES
a	62.5	1/16"
b	156	5/32"
c	281	9/32"
d	438	7/16"
e	500	1/2"

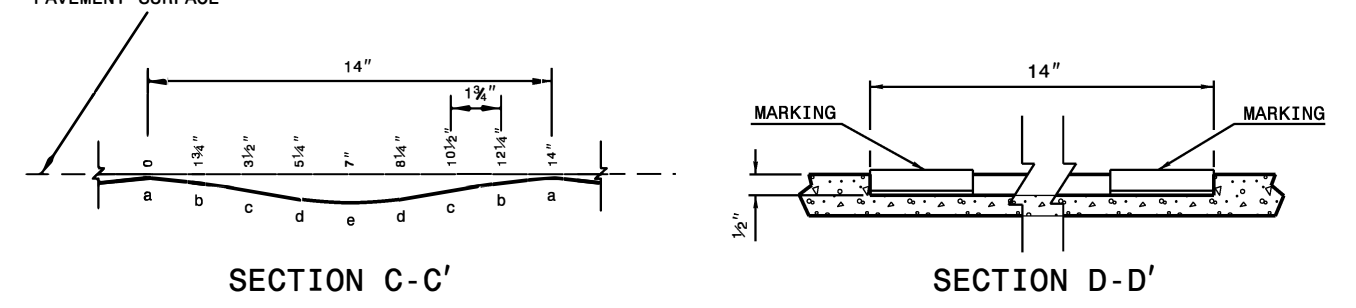


DocuSigned by:  
  
 F651FC9EFE68494...  
 9/3/2021

### 14" CENTER LINE TREATMENT



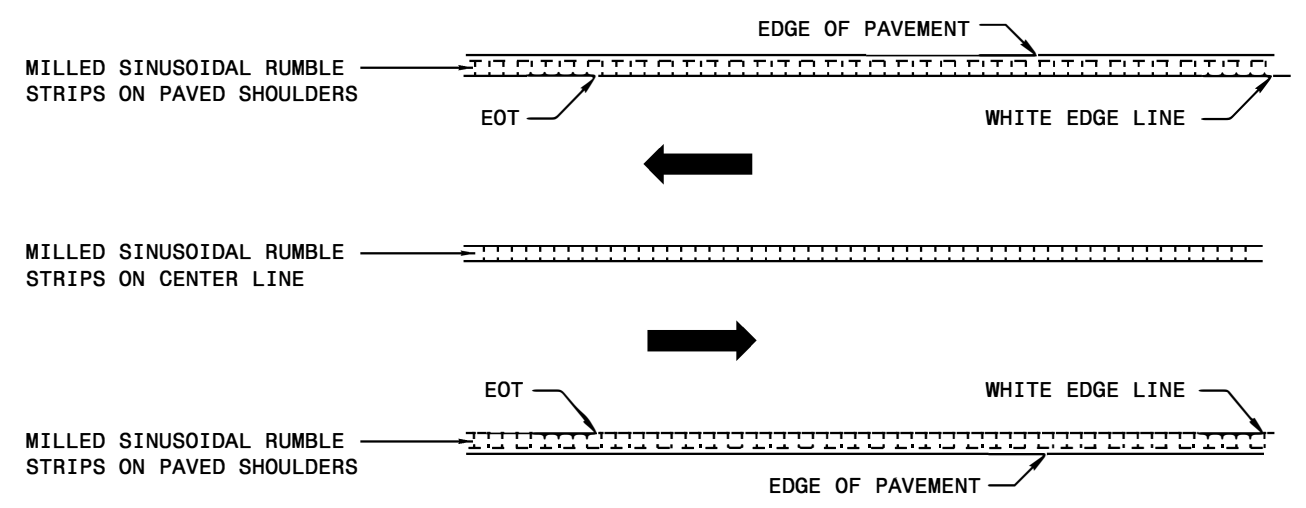
### 14" CENTER LINE MILLING DETAIL



**NOTES:**

- 1) PAVEMENT MARKING MATERIAL SHALL BE THERMOPLASTIC.
- 2) USING A VACUUM, REMOVE ALL DEBRIS FROM THE MILLINGS JUST PRIOR TO PLACING ANY PAVEMENT MARKINGS
- 3) ENSURE GLASS BEADS ARE SPREAD UNIFORMLY OVER THE ENTIRE SURFACE OF THE PAVEMENT MARKING MATERIAL.
- 4) PLACE MILLED SINUSOIDAL RUMBLES AS SHOWN ABOVE IN THIS DETAIL ON BOTH SHOULDERS IN BOTH DIRECTIONS.
- 5) IF SNOWPLOWABLE MARKERS ARE TO BE INSTALLED IN THE CENTERLINE, SKIP A 24" SPACE IN THE RUMBLE STRIPES EVERY 40' OR 80' ACCORDING TO STD. 1250.01

### LANE TREATMENT



\* DETAIL NOT TO A SCALE

7/25/2016

03-SEP-2021 09:40  
 C:\Users\jwoodard\Documents\SRS-Detail.dgn  
 11/2/2021 10:56:11 AM